



Reliable and affordable
versatile lighting solution



EnduraLED- Bulkhead

PHILIPS

EnduraLED- Bulkhead

Presenting an innovative and reliable LED solution that fits seamlessly in a variety of applications. This luminaire can be installed as ceiling mounted and wall mounted. It serves as a simple energy efficient alternative to CFL/incandescent bulkhead luminaires.



Features and benefits



IK 09

Specially designed impact resistant front diffuser makes it a very robust solution



IP 66 protection

Complies to IP 66 protection rating which ensures protection against dust and water



Plug and Play

Completely pre-wired and supplied with electrical cable to minimize the time spent on installation



Fit and forget

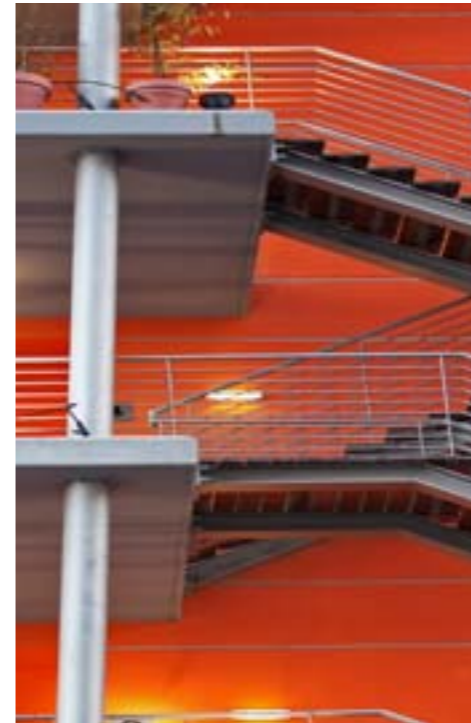
Designed for 50,000* burning hours



Versatile

UV stabilized polycarbonate cover makes it suitable for indoor and outdoor applications

Applications



Building periphery



Industry



Residential areas

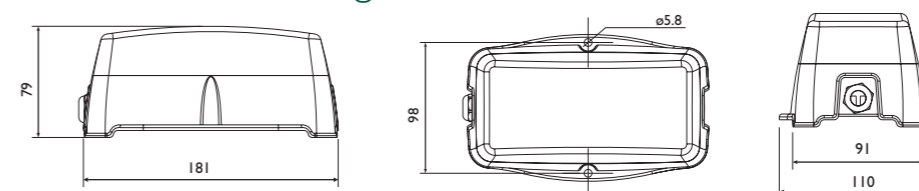
Technical specifications

Specifications	WT202W LED6S CW PSU S1 PC	Conventional Incandescent bulkhead	CFL bulkhead
Lamp	LED	Incandescent 100W	PLC 18W
System Wattage	10W	100W	25W
Lumen output	600	440	480
Color temperature	Cool white	Warm white	Cool white
THD	≤ 20%	N/A	N/A
pf	> 0.9	N /A	N/A
IP	IP 66	IP 54	IP 54
IK	IK 09	-	-
Housing	High pressure die cast aluminum	High pressure die cast aluminum	High pressure die cast aluminum
Front Cover	Poly carbonate front diffuser	Glass front cover	Acrylic front cover

Ordering data

Type	I2NC	Packing per box	Net Wt	Gross Wt
WT202W LED6S CW PSU S1 PC	919515810226	1	0.55 kg	0.75 kg

Dimensional drawing



*Conditions apply

South

Philips Electronics India Ltd,
Temple Towers, 5th. Floor,
Old no. 476, new no. 672,
Anna Salai, Nandanam, Chennai 600 035
Tel :- 91 44 6650 1000
Fax :- 91 44 6650 1075
Email : lighting.india@philips.com

Philips Electronics India Ltd,
Philips Innovation Campus
Manyata Tech Park, Nagavara
Bengaluru-560045
Tel : 080-4189 0000
Fax :- 080 6692 9930
Email : lighting.india@philips.com

Philips Electronics India Ltd,
6-3-1109 / 1 / P/ 103, 3rd floor
Jewalpawani Towers, Rajbhavan Road,
Somajiguda, Hyderabad
Tel :- 040 6646 7676 / 4825
Fax :- 040 6678 7974
Email : lighting.india@philips.com

East

Philips Electronics India Ltd,
7, Justice Chandra Madhab Road,
Kolkata 700 020
Tel : 91 33 2486 7621-24
Fax : 91 33 2486 8318
Email : lighting.india@philips.com

North

Philips Electronics India Ltd,
9th Floor, DLF - 9B, DLF Cyber City
DLF Phase 3, Gurgaon 122002
Tel :- 91 124 460 6000
Fax :- 91 124 460 6666
Email : lighting.india@philips.com

West

Philips Electronics India Ltd,
Technopolis Knowledge Park,
Mahakali caves road,
Chakala, Andheri East, Mumbai 400093
Tel :- 91 22 6691 2000
Fax :- 91 22 6691 2389 / 6691 2398
Email : lighting.india@philips.com

Philips Electronics India Ltd,
602, Heritage Tower, 6th floor,
Behind Visnagar Co-op Bank,
Near Gujarat Vidyapith, Usmanpura,
Ahmedabad, Gujarat
Tel :- 91 79 2754 0708
Fax :- 91 79 2754 0666
Email : lighting.india@philips.com

Philips Electronics India Ltd,

8th floor, DLF - 9B, DLF Cyber City
DLF phase 3, Gurgaon 122002
Tel :- 91 124 460 6000
Fax :- 91 124 460 6666

Contact customer service executive at
1800 102 2929 (Toll free)
1860 180 1111, 0124- 4291111
"Standard call rates apply"



© 2013 Koninklijke Philips Electronics N.V.

All rights reserved. Reproduction in whole or in part is prohibited.
Owing to continuous Innovation & Improvement, Philips India reserves the right
to make changes in the data/details without prior notice.
Care has been taken to ensure that the information contained within is correct.